



A Natural Fit

City of Maple Valley, Washington

Located in King County

Emergency Management/Disaster Response

March 31, 2026



A Natural Fit

Our communities are strongest when we align our efforts across departments and partner agencies. When these efforts are interconnected, we create a network of relationships and shared understanding that pays off in every stage of an incident.



King County

MAPLE VALLEY

A Natural Fit

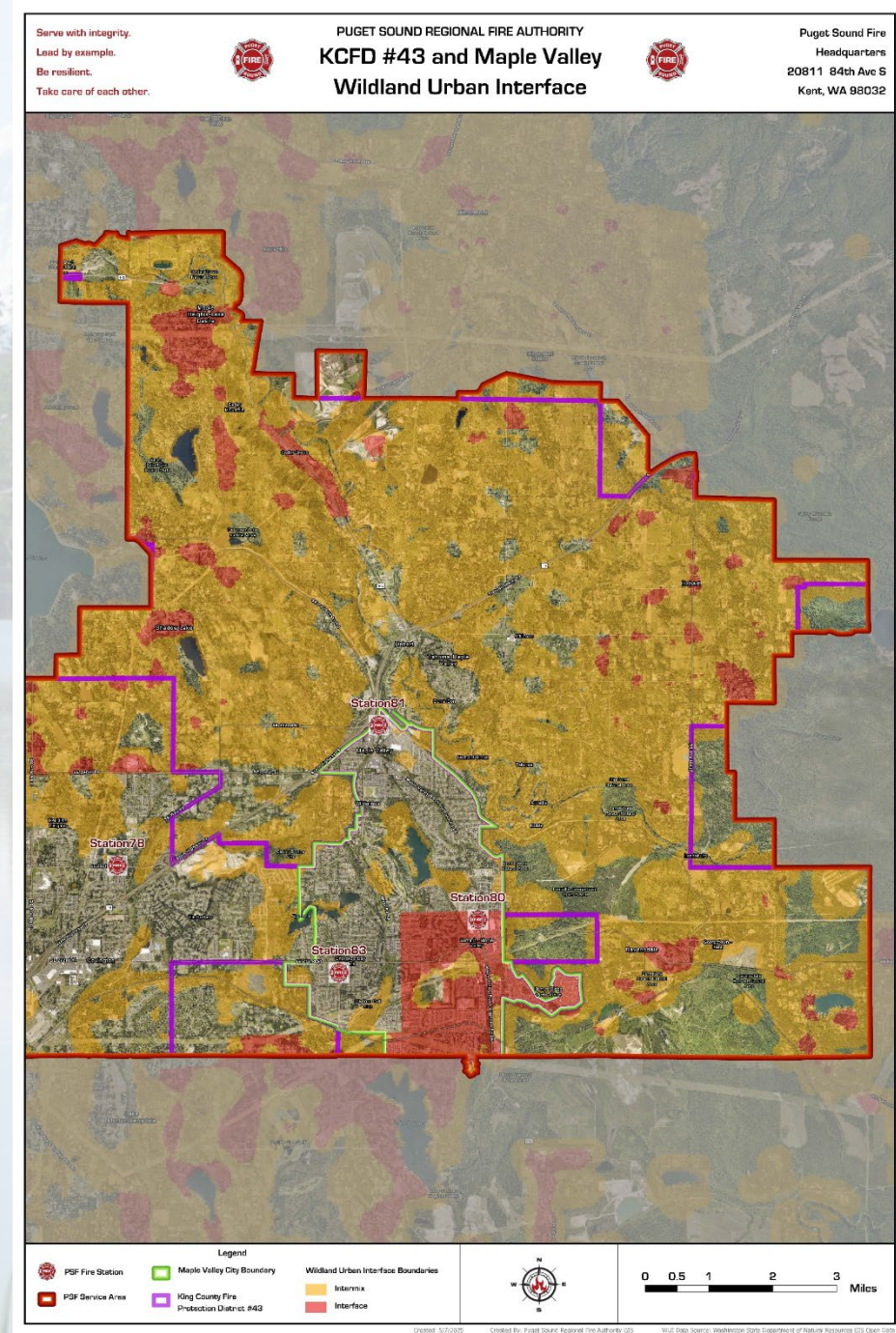
Maple Valley is naturally beautiful and surrounded by forested areas. Located in southeast King County along the Urban Growth Boundary





A Natural Fit

Wildland Urban Interface
Map created by fire
services for Maple Valley's
reference.



Why it is important to prioritize Emergency Management and Plan for Disasters?

Emergencies are no longer rare—or small. Cities today face a higher frequency and severity of disruptions: severe weather, wildfires, cyberattacks, infrastructure failures, public health threats, and human-caused incidents. These events affect every City department—from IT to Finance to Public Works—not just police and fire. City Managers are increasingly judged not by whether an emergency occurred, but by how well their organization prepared for and managed it.





A Natural Fit

“The Why” and our desire lower our community risk of a devastating fire event.

Why it is important to prioritize Emergency Management and Plan for Disasters?

- A community can't be resilient if its government isn't. When departments know their roles, plans are exercised, and leadership understands emergency protocols, the City can:
- Maintain continuity of critical services
- Communicate clearly and consistently
- Support vulnerable populations
- Partner effectively with county, state, and federal agencies
- Lead the community through recovery
- Preparedness is a visible demonstration that the City is capable of leading through crisis.





A Natural Fit

How Does This Translate to Planning for Hazards Such as Wildfires For Maple Valley? (And all communities)



WILDFIRE RESILIENCE IS BUILT LONG BEFORE FIRE SEASON.



COMMUNITY WILDFIRE PROTECTION PLANNING



FUEL REDUCTION AND MITIGATION PROJECTS INCLUDING IDENTIFYING THE HAZARDS AND CLIMATE VULNERABILITY BALANCES WITH HEAT INDEXES AND RISKS



ALERTS AND NOTIFICATION SYSTEMS



EVACUATION ROUTE PLANNING AND TRAFFIC MODELING • CONTINUITY OF OPERATIONS PLANNING (COOP)



WITHOUT THIS PLANNING, THE CITY IS LEFT REACTING, NOT PREVENTING.

When the City has a solid Wildland Urban Interface and Wildfire Preparedness Plan:



Annual Maple Valley Community Emergency Preparedness Fair



THE COMMUNITY IS SAFER



FIRST RESPONDERS ARE SUPPORTED



EVACUATIONS RUN SMOOTHLY



COMMUNICATIONS ARE CLEAR



RECOVERY IS FASTER AND MORE COST-EFFECTIVE



RESIDENTS TRUST THEIR GOVERNMENT IS PLANNING AND MITIGATION THREATS TO THEIR LIFE AND PROPERTY.



A Natural Fit

What have WE done?

- Community WUI Meeting - Summer 2025
- Wildfire Planning Meeting - Spring 2026
- Hazard Mitigation Plan Update - 2025-2027
- Climate Action Planning - Ongoing
- Emergency Managers Wildfire Planning - Ongoing
- King County Wildfire Response Planning - Ongoing
- Earth Day Fair Community Outreach – Ongoing
- Annual Community Preparedness Fair - Ongoing





Thank You.

Questions?

"By failing to prepare, you are preparing to fail." —

Benjamin Franklin