

Pacific NW Based Fisheries and Their Impacts on Municipalities

March 29, 2023



Northwest Managers Conference
Fairbanks, Alaska – March 29, 2023



About Freezer Longline Coalition

Participants in freezer longline sector of Alaska cod fishery

Operations in Bering Sea, Gulf of Alaska, AI

9 AK and WA-based members

Family-owned businesses, CDQ groups and an Alaska Native Corporation

Majority AK-owned fleet

Freezer Longline Fleet

19 active vessels (2022)

Length: ~120'-190'

Crew: 20-25; ~1,500 employed/yr

Catch and process onboard

Target fisheries: Alaska cod (95%+)

Also: turbot, sablefish

Low-impact fishing gear, operations

Generate ~\$225 million annually



Presentation Preview

Management of our Fisheries

Commercial Fishing Operations – Pacific Northwest

Fisheries Supporting Communities

Communities Supporting Fisheries

Planning for the Future

West Coast and Alaska Fisheries Science-led Management

Regional Fishery Management Councils



Halibut Commission



State Fisheries Management





West Coast and Alaska Fisheries Science-led Management

Regional Management Councils

Established under Magnuson Stevens Act

Recognized leaders in sustainable fisheries
management

Science-led, precautionary management

Scientist, stakeholder panels, public comment,
community, tribal engagement

West Coast and Alaska Fisheries Science-led Management



Alaska Fisheries Science Center

Locations: Seattle; Newport, OR; Kodiak, Dutch Harbor, Auke Bay

Northwest Fisheries Science Center

Locations: Seattle; Newport, OR; Port Orchard, WA; Hammond, OR; Pasco, WA



West Coast and Alaska Fisheries Science-led Management

Fisheries Science Centers

Data Collection, Research and Assessments

700+ staff employed by Alaska, Northwest fisheries science centers

Data collection, research of fisheries stocks, ocean ecosystems

Assessments of fisheries stocks to determine overfishing, harvest limits



Commercial Fishing Operations Pacific Northwest

Pacific NW-based North Pacific fleet

WA, OR vessels operating in AK fisheries

Primary Homeports: WA: Seattle | OR: Newport

West Coast fleet

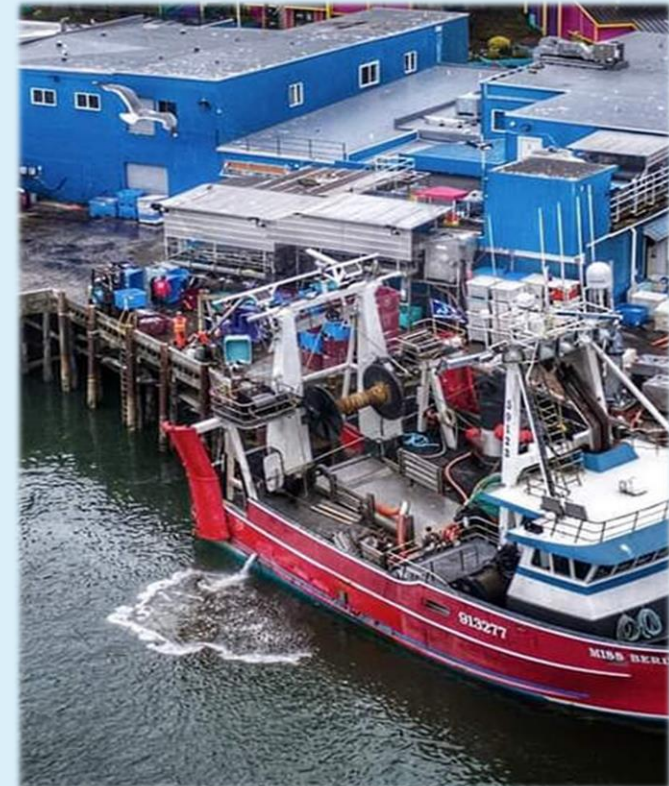
Vessels operating in West Coast state, federal fisheries

Homeports: Puget Sound, coastal communities

Seafood processing operations

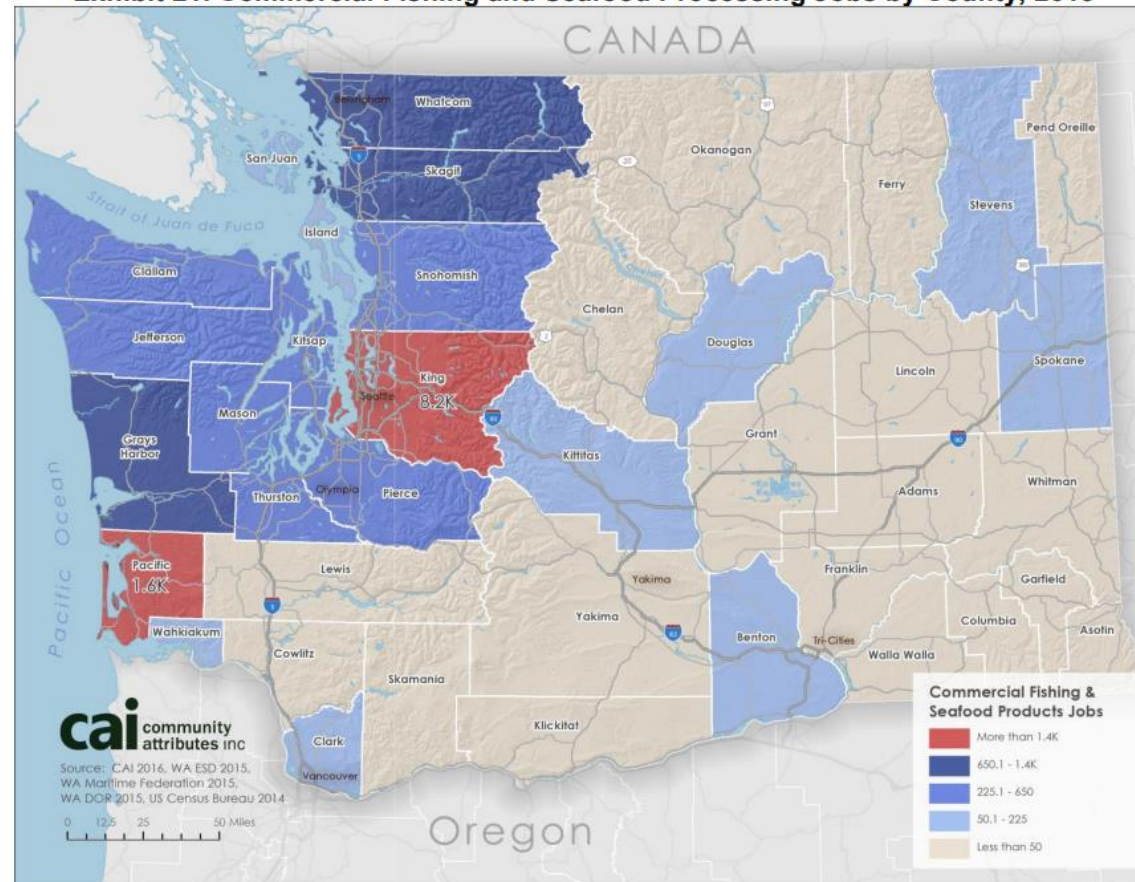
Primary and secondary processing facilities

Locations: Statewide



Fisheries Supporting Communities Washington

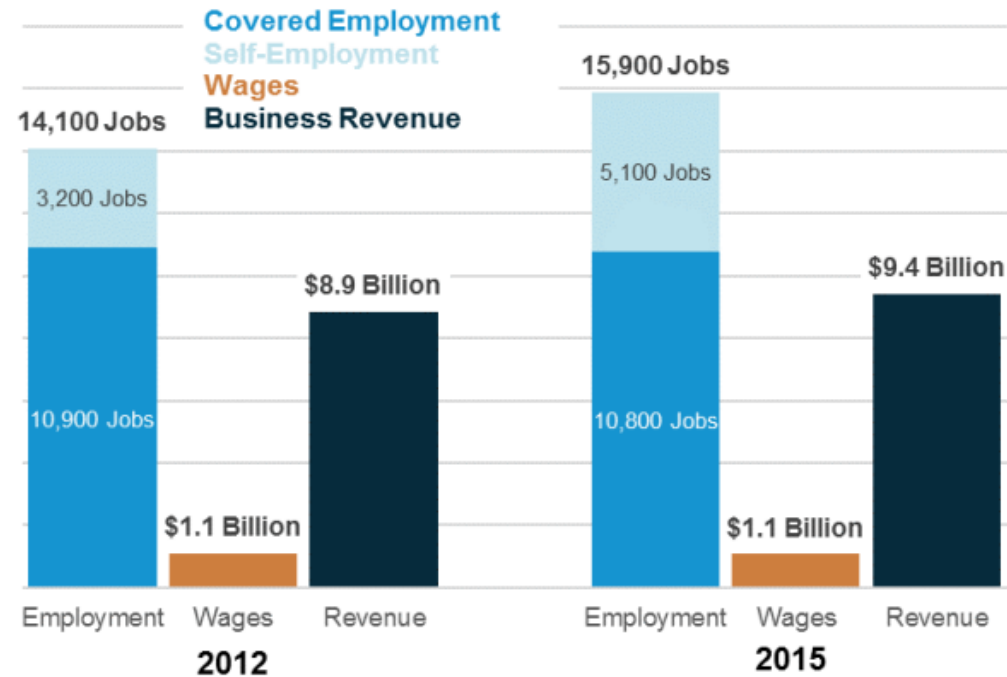
Exhibit 21. Commercial Fishing and Seafood Processing Jobs by County, 2015



Sources: Washington State Department of Revenue, 2015; Washington State Employment Security Department, 2015; United States Census Bureau, 2014; Washington Maritime Federation, 2016; Community Attributes Inc., 2016.

Fisheries Supporting Communities Washington

Exhibit 20. Commercial Fishing and Seafood Processing Jobs, Revenue, and Wages, Washington, 2012 and 2015



Sources: Washington State Department of Revenue, 2016; Washington State Employment Security Department, 2016; United States Census Bureau, 2014; Community Attributes Inc., 2016.

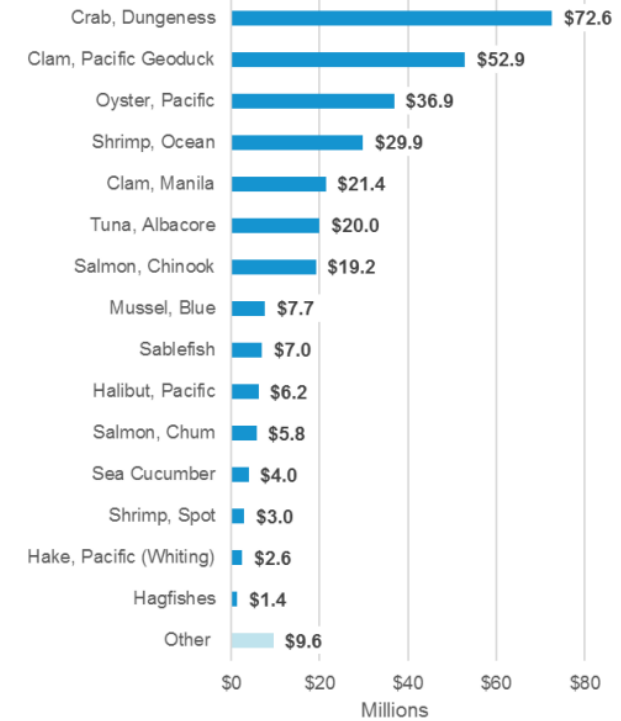
Fisheries Supporting Communities Washington

Exhibit 22. Commercial Fishing and Seafood Processing Subsector Employment, 2015



Sources: Washington State Department of Revenue, 2016; Washington State Employment Security Department, 2016; United States Census Bureau, 2014; Community Attributes Inc., 2016.

Exhibit 23. Value of Harvest by Species brought to Washington State Ports, 2015



Sources: NOAA, 2016; Community Attributes Inc., 2016.



Fisheries Supporting Communities Oregon

Oregon Fisheries Impacts Report* (ODFW):

“Oregon fisheries generated an estimated **\$558 million in income** to the statewide economy in 2019, equivalent to about **9,200 jobs**. **Total output is estimated to be \$1.2 billion**.”

“The **fishing industry share of the coastwide economy is 10.5 percent**... The local share varies between 5.7 percent (Tillamook County) and 16.4 percent (Lincoln County).”

“The consistency in (fishing) industry activity overall has allowed related businesses (provisioning, repair, gear manufacturing, etc.) to develop.”

*Oregon Commercial and Recreational Fishing Industry Economic Activity Coastwide and in Proximity to Marine Reserve Sites for Years 2018 and 2019

Fisheries Supporting Communities Supporting the Maritime Economy

Shipbuilding
and repair

Shipping

Gear and
equipment
manufacturing

Insurance

Provisioning

Education and
training

Fisheries Supporting Communities Supporting the Maritime Economy



Reedsport, OR



Anacortes, WA

INDUSTRY'S ANNUAL ECONOMIC IMPACT IN WASHINGTON

Direct Revenue
of Affected Sub-Sectors

\$14.2B
of \$16.7B

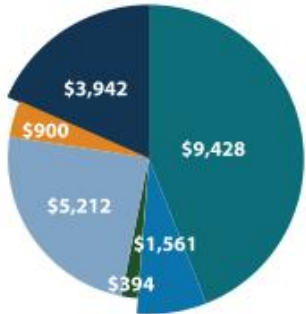
Additional
Revenue

\$17.7B
of \$20.1B

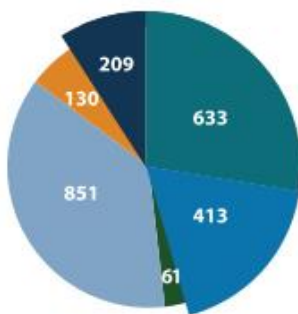
Combined Impact
to WA Economy

\$31.9B
of \$37.6B

Revenues
(\$millions)



Establishments
(Total: 2,300)



Recreational Boating & Boat Building

Maritime Logistics & Shipping

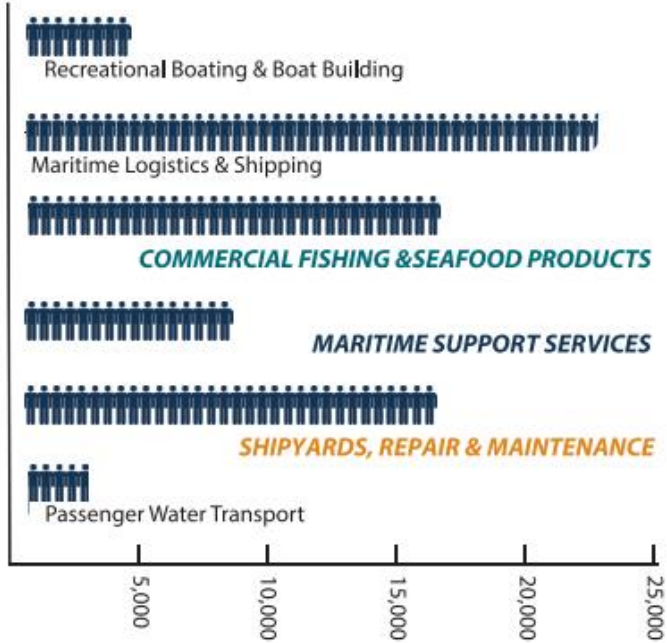
Commercial Fishing & Seafood Products

Maritime Support Services

Shipyards, Repair & Maintenance

Passenger Water Transportation

JOBS BY INDUSTRY SUBSECTOR



In 2015, the maritime cluster directly employed **69,500**. Indirect and induced maritime jobs accounted for another **120,000**, for a total impact of nearly **190,000** jobs in Washington.

The combined annual revenues of the fishing and seafood processing, maritime support services, and ship building total **\$14.2 billion**. Estimates on the impact from modernization could be as much as **\$785 million** between 2017 and 2026, and generate as many as **750** new jobs.***

The affected sectors employed over **42,000** people in 2015 across Washington state. The maritime industry paid nearly **\$4.5 billion** in wages with average salaries of **\$65,150**. In comparison, the state's median wage is **\$56,700** (does not include benefits).

Fisheries Supporting Communities

Supporting the Maritime Economy

Communities Supporting Fisheries

Nurturing a strong fisheries economy



Ecosystem of
maritime services



Port,
transportation
infrastructure



Workforce training
and education



Investment in
innovation

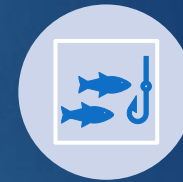




Planning for the Future



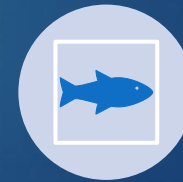
Modernization of
fleet, facilities



Innovation in
fisheries, operations



Next-generation
workforce



Sustaining
productive fisheries,
ecosystems

Washington Maritime Impacts Study

Coming this Fall!



Thank cod. I thought he would
never stop talking about fish.

Fish Joke