



USCG ARCTIC OPERATIONS BRIEF

FOR THE NORTHWEST
EMERGENCY MANAGERS
CONFERENCE 2023

ARCTIC OPERATIONS BRIEF

01

Coast Guard
Arctic Enterprise

02

Arctic
Shield/Marine
Safety Task Force

03

Arctic Emergency
Response

01: COAST GUARD ARCTIC ENTERPRISE

ARCTIC POLICY 101

WHAT IS ARCTIC?

- Arctic is perceived by many to be north of Arctic Circle
- Arctic Shield boundaries are dictated by ARPA & NEPA CADEX
- "Arctic is what Arctic Funds"
- Excludes Kenai, Anchorage Bowl, and Kodiak

UNITED STATES COAST GUARD

★ ★ ★ ★
ARCTIC
STRATEGIC OUTLOOK



COAST GUARD ARCTIC ENTERPRISE

- HQ Arctic Policy (5PW)
- Center for Arctic Policy (CASP)
- PACAREA
- D17 Arctic Policy Coordinator
- D17 Arctic Shield
- Sector Anchorage Arctic Ops

02: ARCTIC SHIELD MARINE SAFETY TASK FORCE

SECTOR ANCHORAGE'S ROLE
AND MISSION CHALLENGES

COAST GUARD D17: ARCTIC SHIELD OPS TASK FORCES

- Aviation (FOL)
- National Security and Enforcement
- Marine Safety (DPI/Sec ANC)



SECTOR ANCHORAGE'S ARCTIC MIS SION PORTFOLIO

- Commercial Fishing Vessel Exams
- Facility Inspections (33CFR154)
- Port State Exams
- Domestic Vessel Inspections
- Gov't Initiated Unannounced Ex.
- Ice Rescue Training
- Kids Don't Float/Boating Safety
- GRS Validation/"Arctic Guardian"
- Tribal/Community Engagement



OPERATIONAL CHALLENGES

Juneau – Barrow	1100 miles
Kodiak – Barrow	945 miles
Dutch Harbor – Barrow (Boston-Miami)	1250 miles (1250 miles)
Total US Coastline	12,479 miles
Total AK Coastline	6,640 miles

ALASKA vs. THE LOWER 48

IF ALASKA WERE PLACED ON TOP OF THE CONTINENTAL U.S., IT WOULD STRETCH FROM NORTHERN MINNESOTA DOWN THROUGH TEXAS, FROM THE PACIFIC OCEAN OFF THE CENTRAL CALIFORNIA COAST TO SAVANNAH, GEORGIA.



ALASKA'S AREA WOULD COVER 21% OF THE LOWER 48 STATES.

YEAR-ROUND OPERATIONAL PLANNING



02: ARCTIC SHIELD MARINE SAFETY TASK FORCE

THE REGULATED FACILITIES PROBLEM



Bulk Fuel Facility Characteristics:

Lower48

Corporation owned/operated for profit

Environmental compliance staff available, often on-site

Does not require significant CG resourcing to regulate

Not directly impacted by climate change

Generally, not the single environmental threat in each area

Complex facility: CG leverages shut-in/down given non-compliance

Bulk Fuel Facility Characteristics:

Arctic & Western AK

Small Corporation owned/operated for profit; beholden to community

Owner/operator has no compliance staff or experience

Requires significant CG resourcing to regulate

Directly impacted by climate change

Generally, facility worst case discharge is the single greatest environmental threat in a community

Simple facility; community lifeline, CG cannot shut-in/down

THE PROBLEM

Kivalina NW Arctic Borough
School District

1970s ASTs built via Federal
grants are not maintained

37-year-old tank farm, pipeline,
and marine header have had little
maintenance work done and
severely corroded



SIGNIFICANT SPILL HISTORY FROM REGULATED FACILITIES

Recent Pollution incidents:

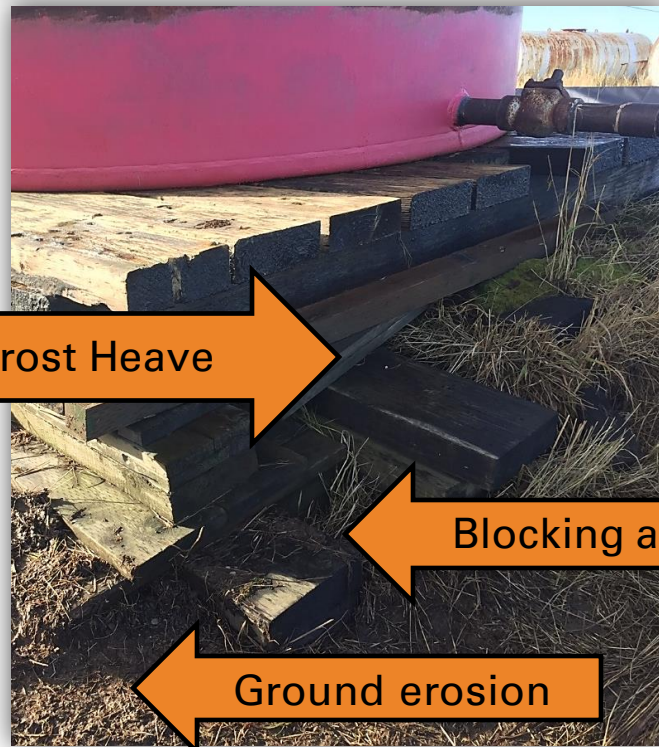
Jan 2017: Kaktovik – 4200 gal

Apr 2018: Scammon Bay – 7000 gal

Jun 2018: Gambell – 2700 gal

Oct 2018: Newtok (see images) – 150 gal (proactive CG/ADEC measures averted thousands of gallons from being spilled)

Aug 2019: Napakiak (see next slide) – Potential spill due to river erosion, Admin Order issued

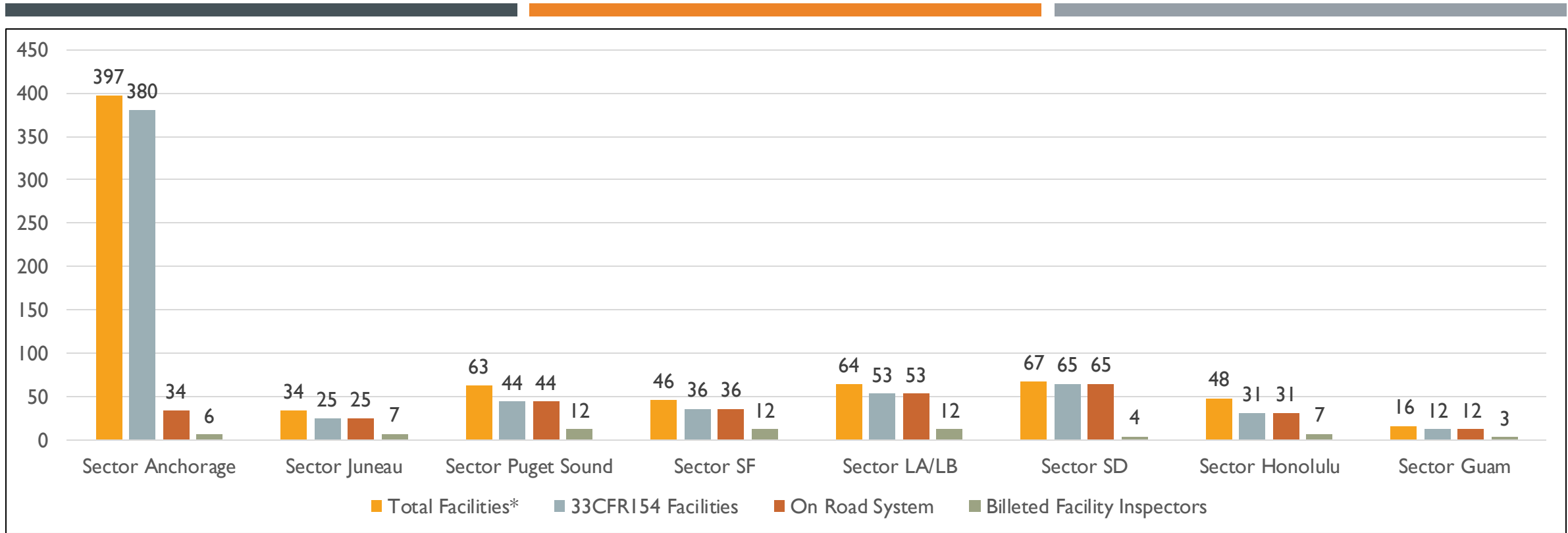


Frost Heave

Blocking and Bracing

Ground erosion



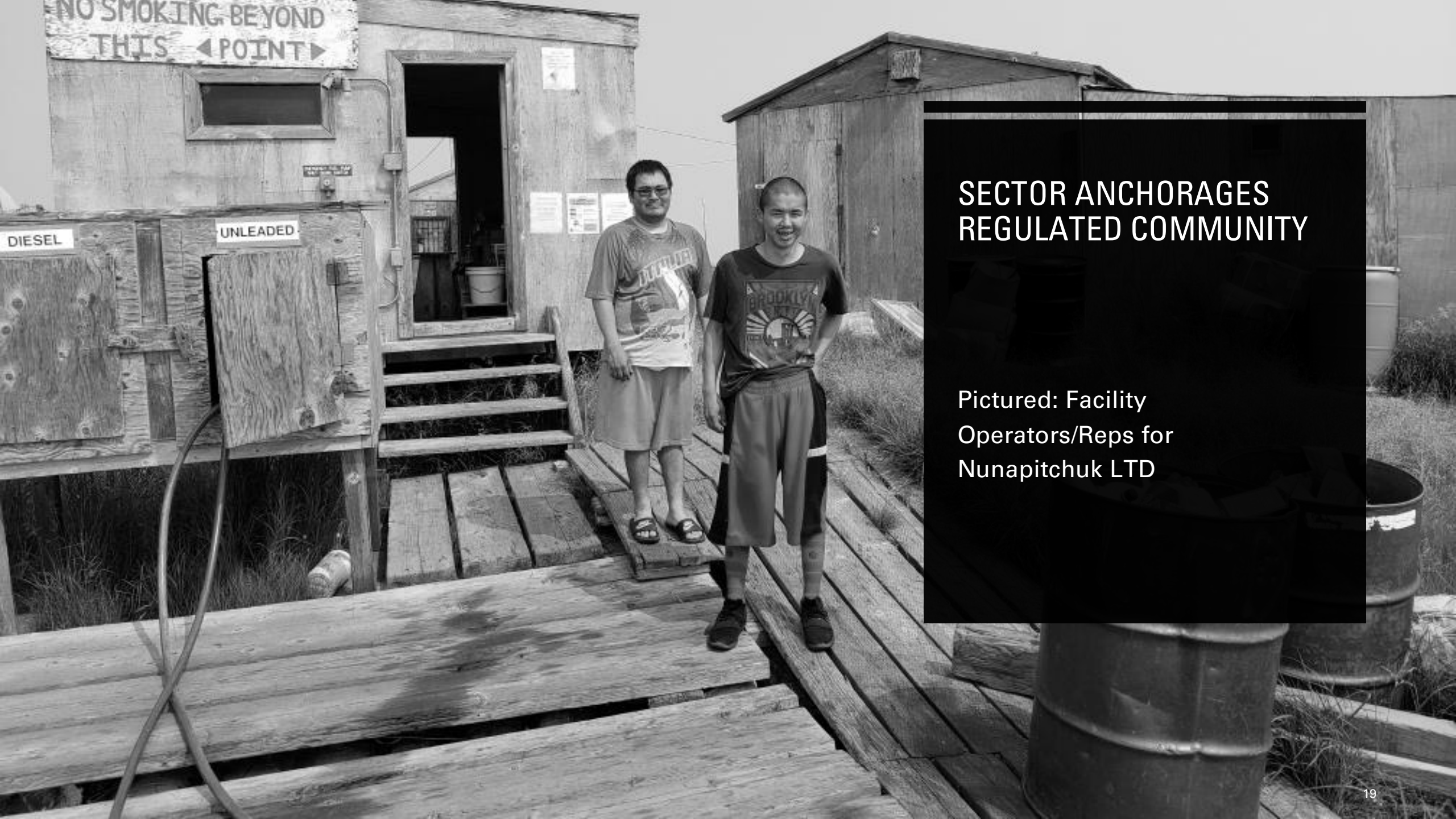


REGULATED FACILITIES & FACILITIES INSPECTORS ASSIGNED

Per Pacific State Sector (excluding subunits)

LOWER KUSKOKWIM SCHOOL DISTRICT: POTENTIAL RELEASE FROM TANK FARM





SECTOR ANCHORAGES REGULATED COMMUNITY

Pictured: Facility
Operators/Reps for
Nunapitchuk LTD

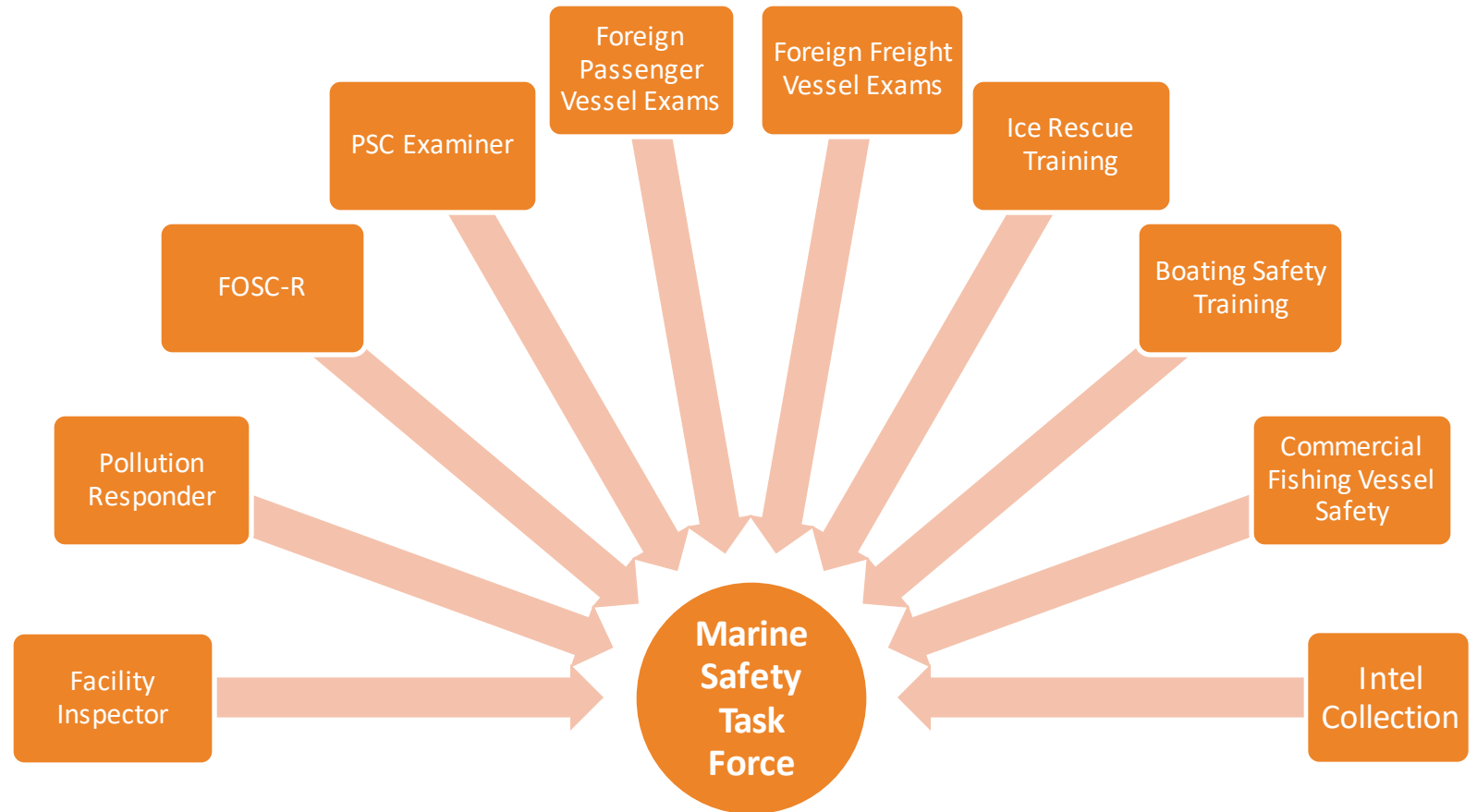
03C: ARCTIC SHIELD MARINE SAFETY TASK FORCE

ARCTIC INNOVATION: INITIATING A
NEW DEPLOYMENT MODEL

MSTF DEPLOYMENT TEAMS

Teams deploy to hub communities for 5 – 14 days:

Anchorage, Aniak, Bethel, Dillingham*, East Aleutians, Fairbanks, Galena, King Salmon, Kotzebue, Nome, Prudhoe Bay, St. Mary's, and Utqiagvik.



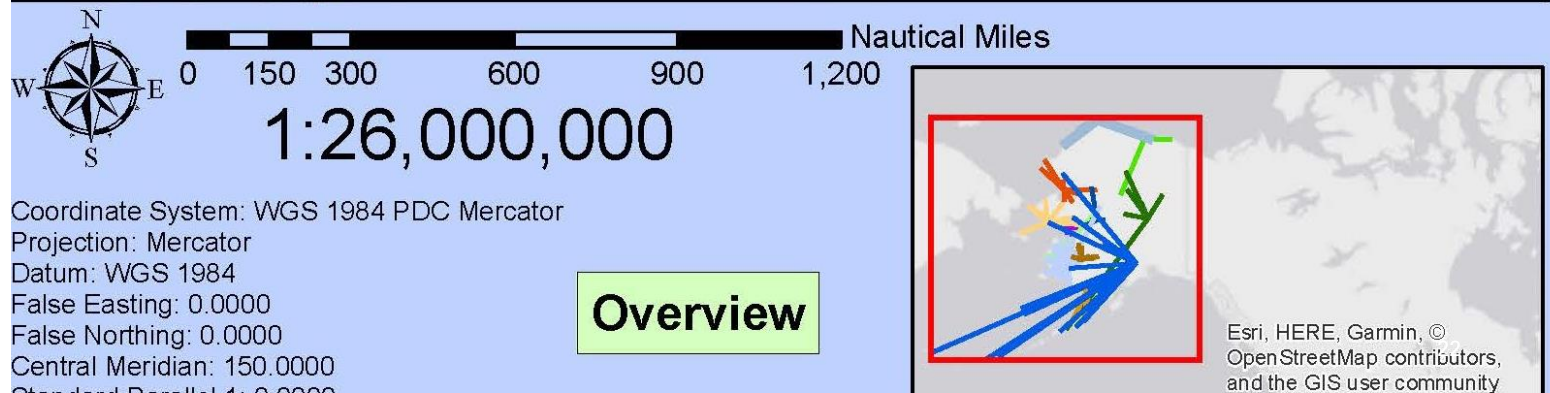
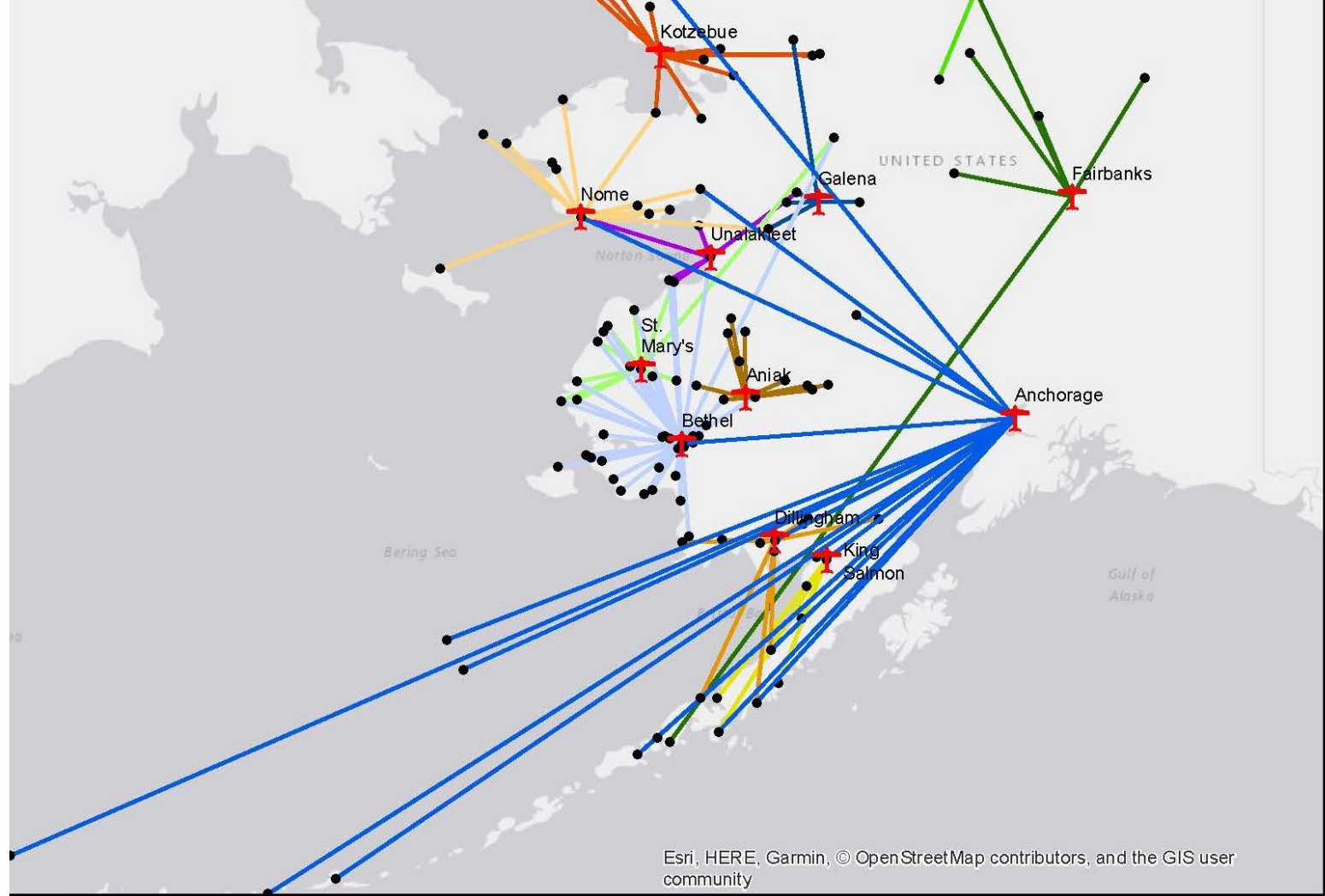
“Getting dedicated and qualified CG personnel... into the right hub communities... at the right time.”



HUB AND SPOKE MODEL

Hub communities have lodging and provide regional resources to villages

Civil Air Patrol required for mission success



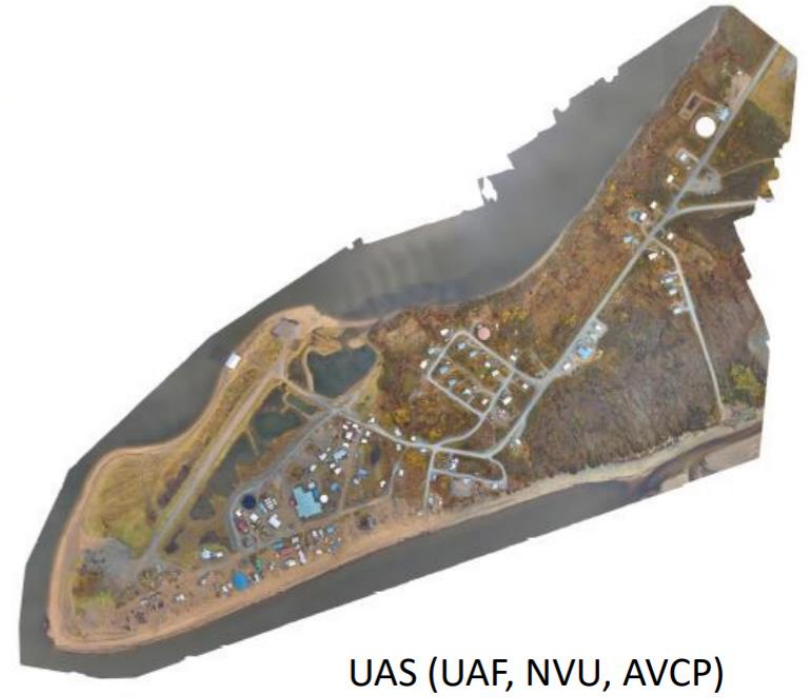
03: ARCTIC EMERGENCY RESPONSE

MANAGING DISASTER RESPONSE IN
THE ARCTIC

TYPHOON MERBOK

- September 2022: Historic storm hit Western Alaska.
- State EOC and CG Incident Management Team activated.
- CG responders surveyed 32 villages within a week of the storm.





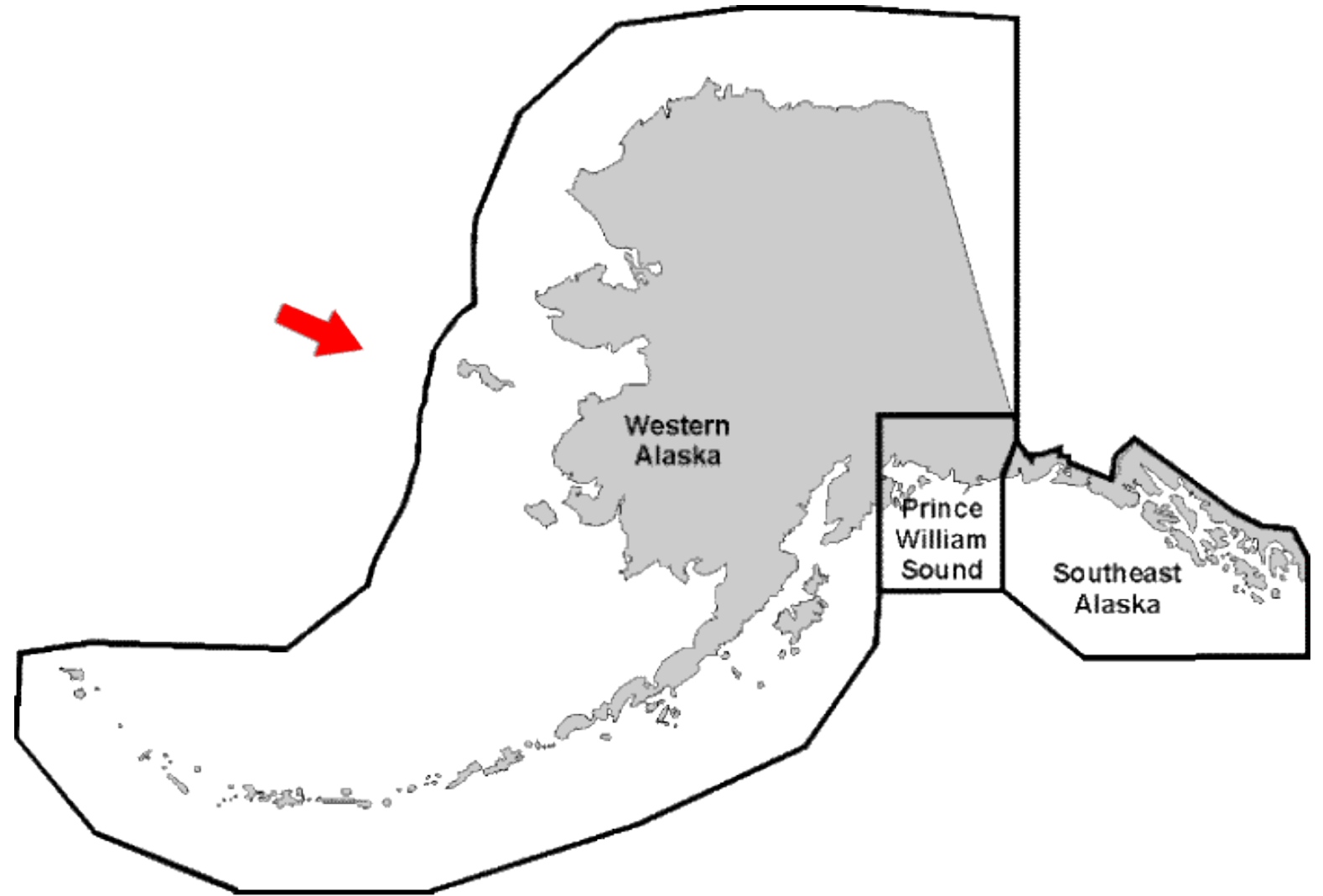
UNMANNED AERIAL SYSTEMS

- Sector funded pre planned preparedness operations
- Emergency response
- Continued partnerships



ALASKA AREA COMMITTEES

- Prepare the Area Contingency Plan (ACP)
- Advise Federal and State OSCs
- Conduct outreach activities





QUESTIONS?

